

SUPPORTING STUDENT SUCCESS

Synchronous Online Session 2

**How are we creating an environment
for student success?**

April 8 | 1pm (CT)

Synchronous Online Session 2: How are we creating an environment for student success?

Facilitated by



Charlayne Mitchell (she/her)
Global Health Studies



Jasmine Gurneau (she/her)
Office of Institutional Diversity & Inclusion

We invite you to...

Actively engage in this program that brings together colleagues across academic and professional disciplines, instructional contexts, and levels of pedagogical training with a [beginner's mind](#)

Participate in ways that challenge *and* encourage our individual and collective growth in knowledge and skills

Participating today can count towards earning a digital badge to reflect your commitment to supporting student success

Await the Open Educational Resource (OER), including a recording of today's live event



Participation Guidelines

- ✓ Assume positive intent, and take accountability for what you do and say.
- ✓ Be aware of your assumptions, expectations, and judgements.
- ✓ Choose the best way to engage for yourself, and respect the choice that others make to participate.
- ✓ Commit to curiosity over certainty.
- ✓ Identify your learning edges and push them.
- ✓ Embrace discomfort and silence.
- ✓ Listen actively.
- ✓ Monitor your time.
- ✓ Speak for yourself from your own experience and your own perspective.
- ✓ What is said stays; What is learned leaves.



Agenda for Today's Session

- Grounding & Introductions
- Mural Activity: Design a T-Shirt
- Framework & Scenario
- Key Barriers & Discussion
- Action Planning & Tools/Resources
- Outcomes & Closing



“Teachers who have a vision of democratic education assume that learning is never confined solely to an institutionalized classroom. Rather than embodying the conventional false assumption that the university setting is not the ‘real world’ and teaching accordingly, the democratic educator breaks through the false construction of corporate university as set apart from real life and seeks to re-envision schooling as always a part of our real world experience.”

—bell hooks, *Teaching Community: A Pedagogy of Hope*

Creating a Campus Culture for Student Success

“A positive and supportive environment that fosters a sense of belonging, encourages active engagement in learning, provides access to resources, and promotes healthy student wellbeing, ultimately contributing to higher rates of student learning and success.”

—Jillian Kinzie (Pre-Practicum Keynote)

Introductions

Name (pronouns, department/program/unit)

Share 1 reason why environment is
critical for student success



Self-esteem

Sense of belonging

Motivation

Community worth

Academic achievement

Mental health

Design a T-Shirt

Using *Mural*, design (or choose) a T-shirt that represents a **supportive environment**

Take 5 minutes to create (or choose) your design

Join a breakout room and share your design, what you created (or chose) and why



Framework:

Guide on the Side, Not Sage on the Stage

- Designing spaces for student-led discussions and discovery
- Stepping back to allow authentic peer interactions
- Guiding subtly through strategic questions rather than direct answers
- Empowering students to construct meaning together
- Observing group dynamics and adjusting facilitation as needed

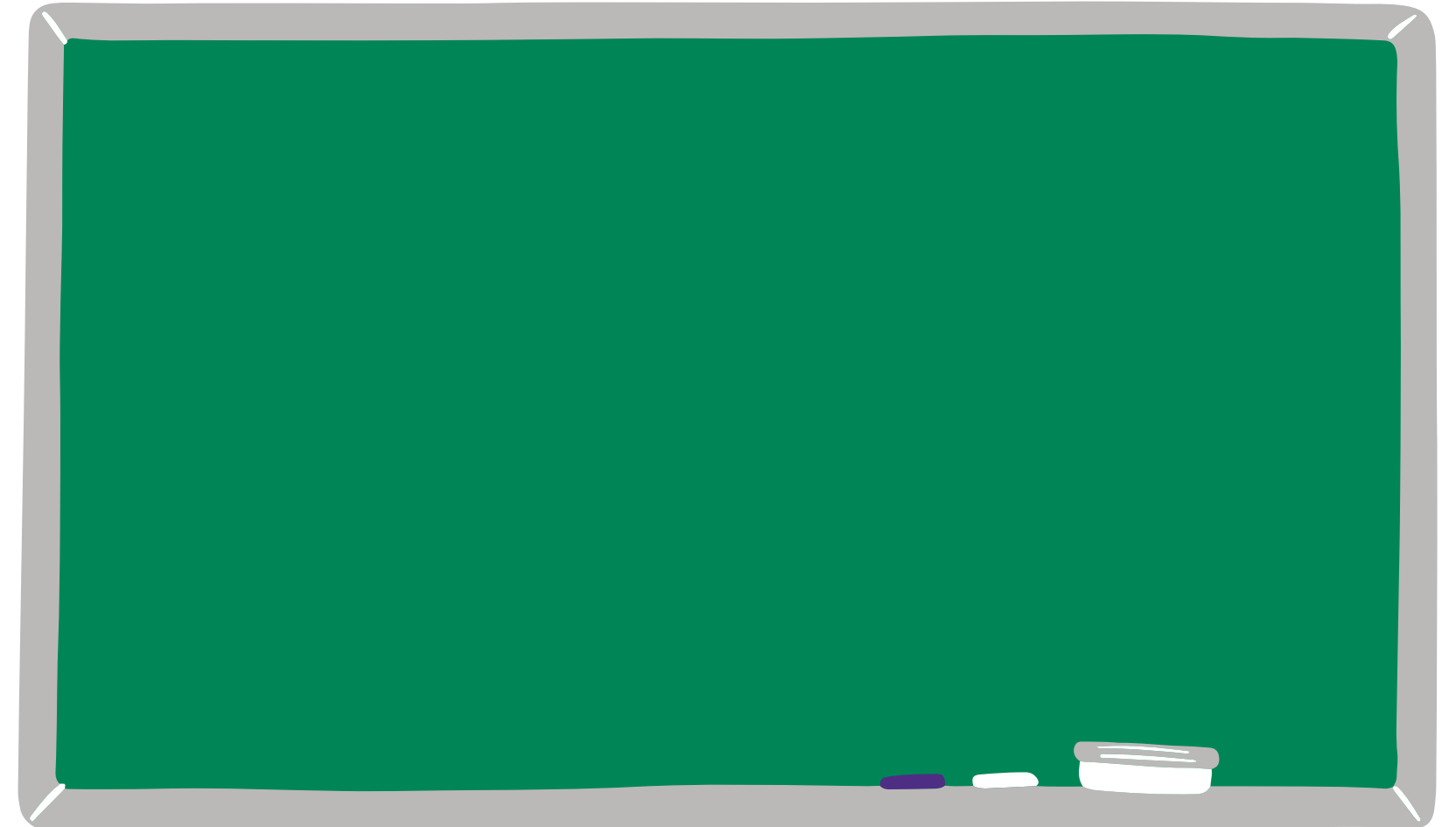
Add additional ideas in the chat

Source: King (1993)



Scenario

In your World Literature class, students struggle to engage in meaningful discussions about complex texts. During seminars, only 3-4 students participate, while others remain silent or appear distracted. The room has traditional rows of desks, harsh fluorescent lighting, and bare walls.



Scenario

In your World Literature class, students struggle to engage in meaningful discussions about complex texts. During seminars, only 3-4 students participate, while others remain silent or appear distracted. The room has traditional rows of desks, harsh fluorescent lighting, and bare walls.

What environmental barriers limit discussion?

How would you transform the space?

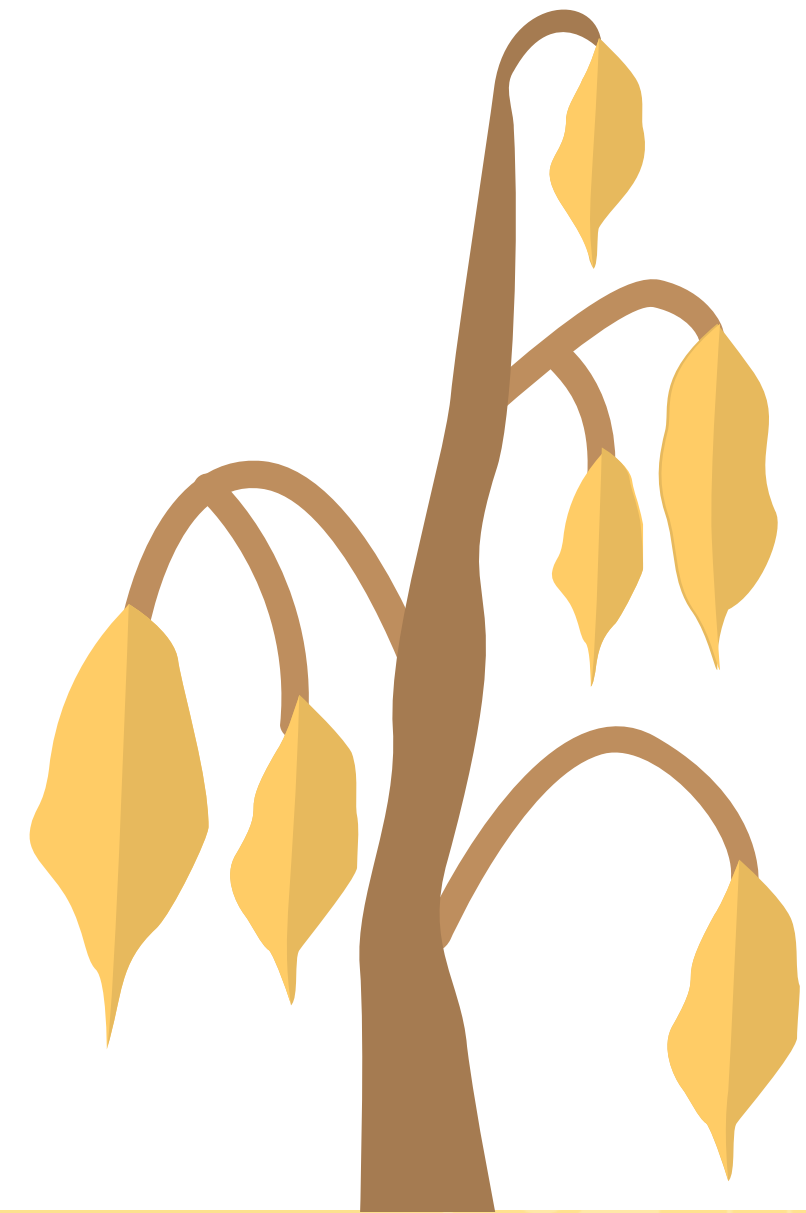
What immediate changes could foster better dialogue?

Key Barriers to Growth in “Elite” Institutions

- Imposter syndrome and self-doubt
- Academic perfectionism
- Pressure to maintain an appearance of effortless achievement
- Cultural capital gaps
- Competitive rather than collaborative
- Stigma around help-seeking behavior
- Work-life imbalance
- Financial stress

Add additional barriers in the chat

Source: McGee (2021)



Facilitation Strategies:

- Unpack/unsettle academic support structures, curriculum, pedagogy, assessment
- Consider student belonging through cultural wealth modeling
- Build community-centered learning environments
- Adjust physical space
- Address power dynamics
- Integrate diverse knowledge systems

Add additional strategies in the chat

Source: Garriott (2020)

Questions to consider:

How can we use "both/and" thinking to acknowledge systemic barriers while valuing cultural assets?

What do we need to unlearn/relearn when designing/redesigning our learning environments?

How does addressing power dynamics enhance academic excellence and student outcomes?

Action Planning: ORID Method

- **Objective (what):** Review your syllabus, policies, course topics, reading sources, assignment formats
- **Reflective (gut):** What stands out to you? Key voices? Missing perspectives?
- **Interpretive (so what):** What are the cultural norms/values you are enforcing? What barriers are you lifting/perpetuating? How does this connect to students' experience?
- **Decisional (now what):** Identify immediate changes to implement—What other values, voices, perspectives, resources would you include?

How does my department, office, or program play a role in ensuring our students have a successful, cohesive experience?

Expected Outcomes

- Increased student engagement
- Improved learning outcomes
- Enhanced student self-efficacy
- Stronger professor-student relationships
- Better course completion rates



Additional Tools & Reminders

- ICA ORID Method
- Mural.co
- Use "both/and" thinking vs. "either/or"
- Acknowledge different starting points in equity work
- Frame inclusion as strengthening academic excellence
- Connect to universal teaching challenges
- Ground discussion in shared commitment to student success

What's next?

Learning Lab:

Create an Accessible Canvas Site in 7 Easy Steps

Thursday, Apr. 10 @ 12-1pm (CT)

Check back for a response to your feedback or questions on the [Feedback & Insights Board!](#)
(Add more feedback or questions at any time)

**Schedule a
consultation**



Eun Sandoval-Lee, EdS

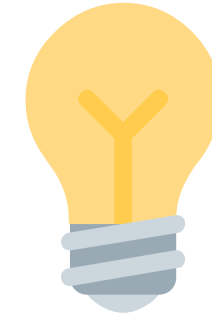
SSSP Consultant

<https://bit.ly/ESLconsultation>

**WE WANT YOUR
FEEDBACK!**

Exit Ticket

Before you leave,
please complete the Zoom poll



**What specific aspects of
the session did you find
most valuable?**



**What else would you like to
learn more about?**

Q&A

Enter questions in the chat

thank you

